


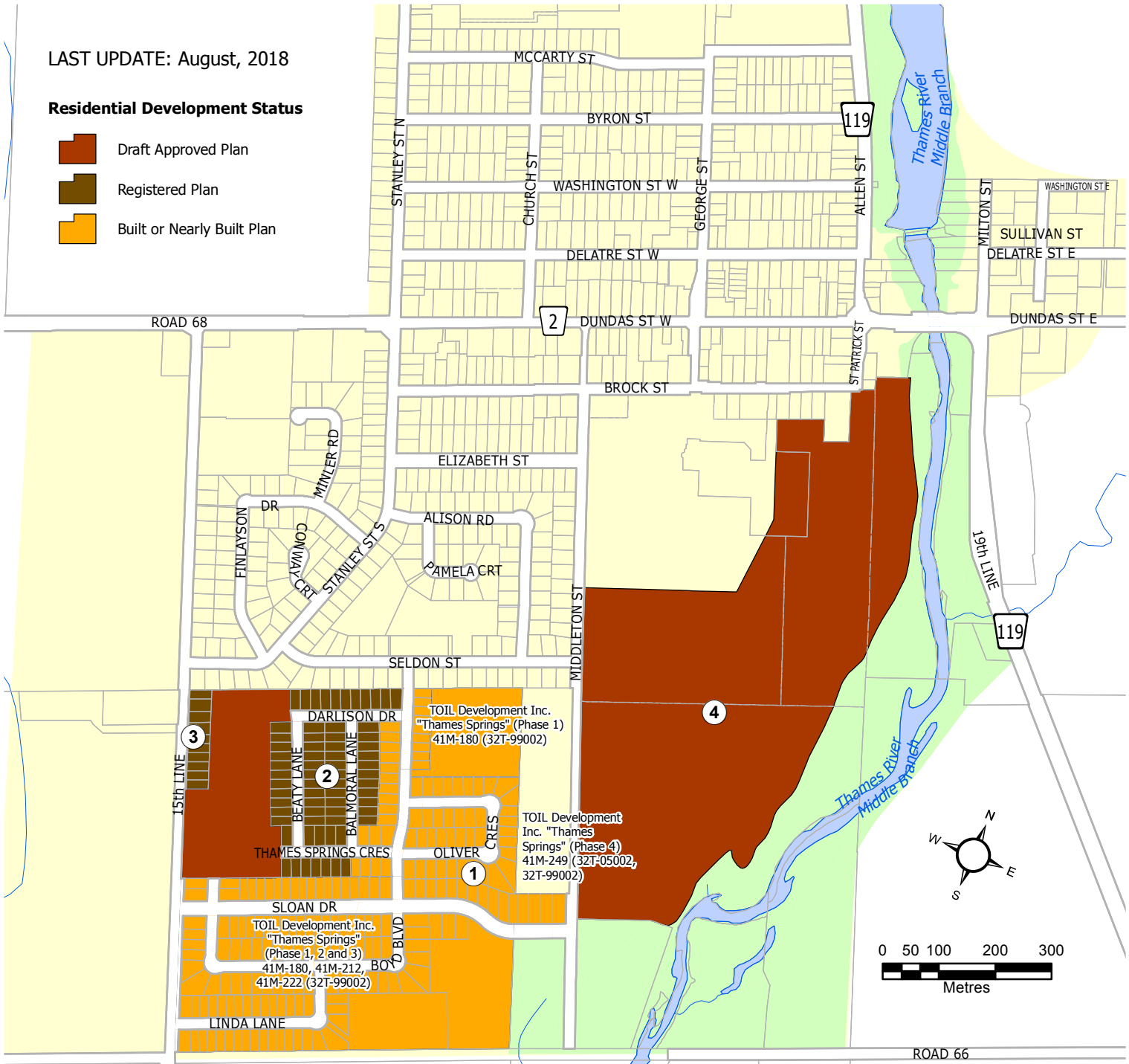


Development Activity Village of Thamesford

LAST UPDATE: August, 2018

Residential Development Status

-  Draft Approved Plan
-  Registered Plan
-  Built or Nearly Built Plan



1. Toil Development Inc.
"Thames Springs"
(13.38 acres)
41M-249
(32T-05002, 32T-99002)
(Phase 4)
55 Single Detached

2. Toil Development Inc.
"Thames Springs"
32T-99002
(31.49 acres)
SB12-07-05
Remaining Development
33 Single Detached
1 Block Multi-Residential

41M-303 - 26 Single Detached
41M-324 - 30 Single Detached
41M-331 - 37 Single Detached

3. Loy-El Sloan Development Inc.
(1.83 acres)
SB10-04-5
9 Single Detached

4. Cold Springs (Maple Leaf Foods)
(84 acres)
32T-00002
7 Blocks - Light industrial/
business park
2 Blocks - Medium Density Residential
(72 to 240 units)
1 Block - Low Density Residential
(up to 154 units)
Proposed DAE to Oct. 2, 2020
Current lapsing Oct. 2, 2018

