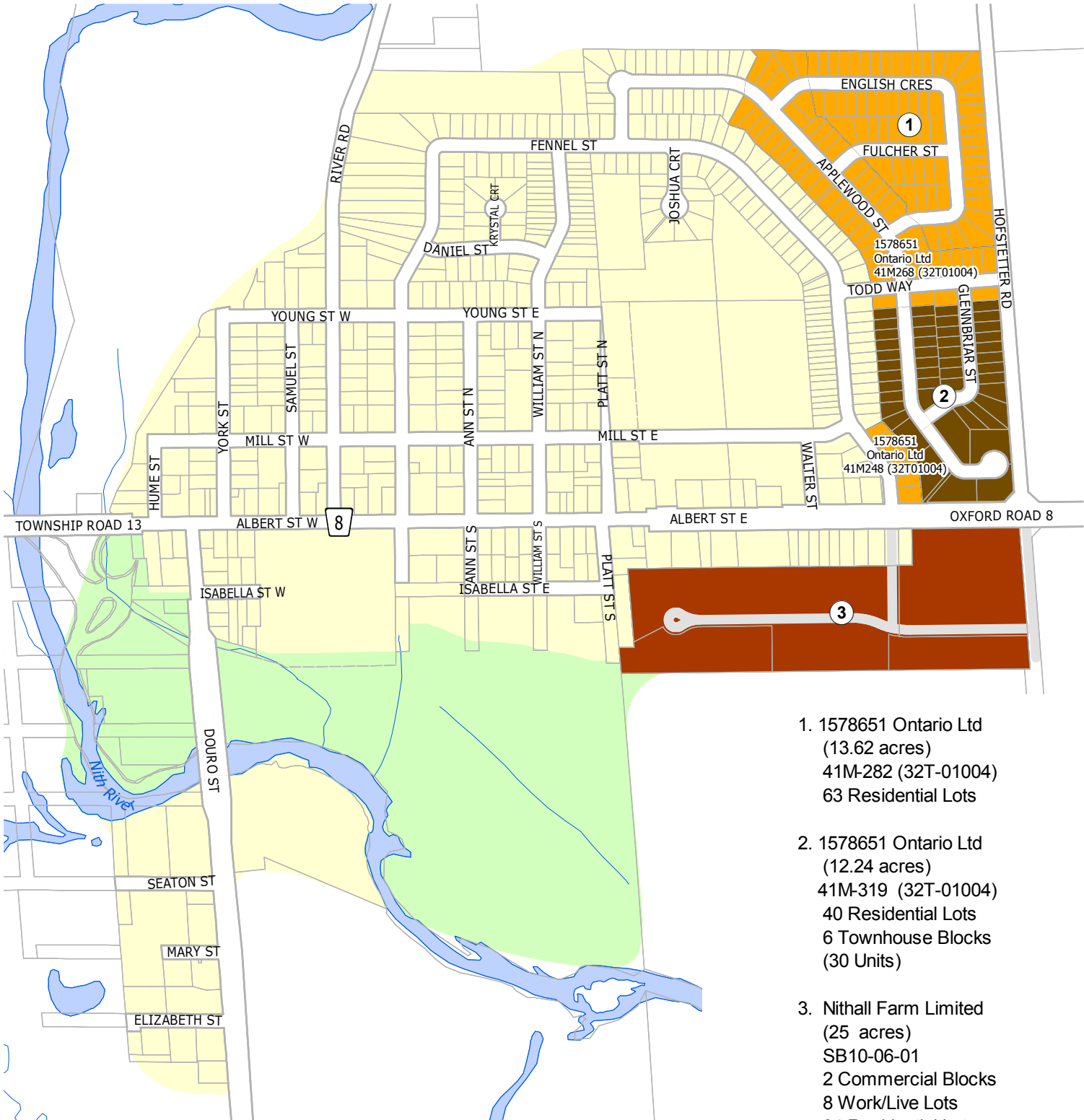





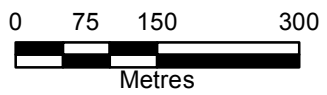
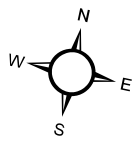
Development Activity Village of Plattsville



1. 1578651 Ontario Ltd
(13.62 acres)
41M-282 (32T-01004)
63 Residential Lots
2. 1578651 Ontario Ltd
(12.24 acres)
41M-319 (32T-01004)
40 Residential Lots
6 Townhouse Blocks
(30 Units)
3. Nithall Farm Limited
(25 acres)
SB10-06-01
2 Commercial Blocks
8 Work/Live Lots
34 Residential Lots

Residential Development Status

-  Built or Nearly Built Plan
-  Circulated or Submitted Plan
-  Draft Approved Plan
-  Registered Plan



LAST UPDATE: August, 2018



Produced By The Department of Corporate Services
Information Services ©2018